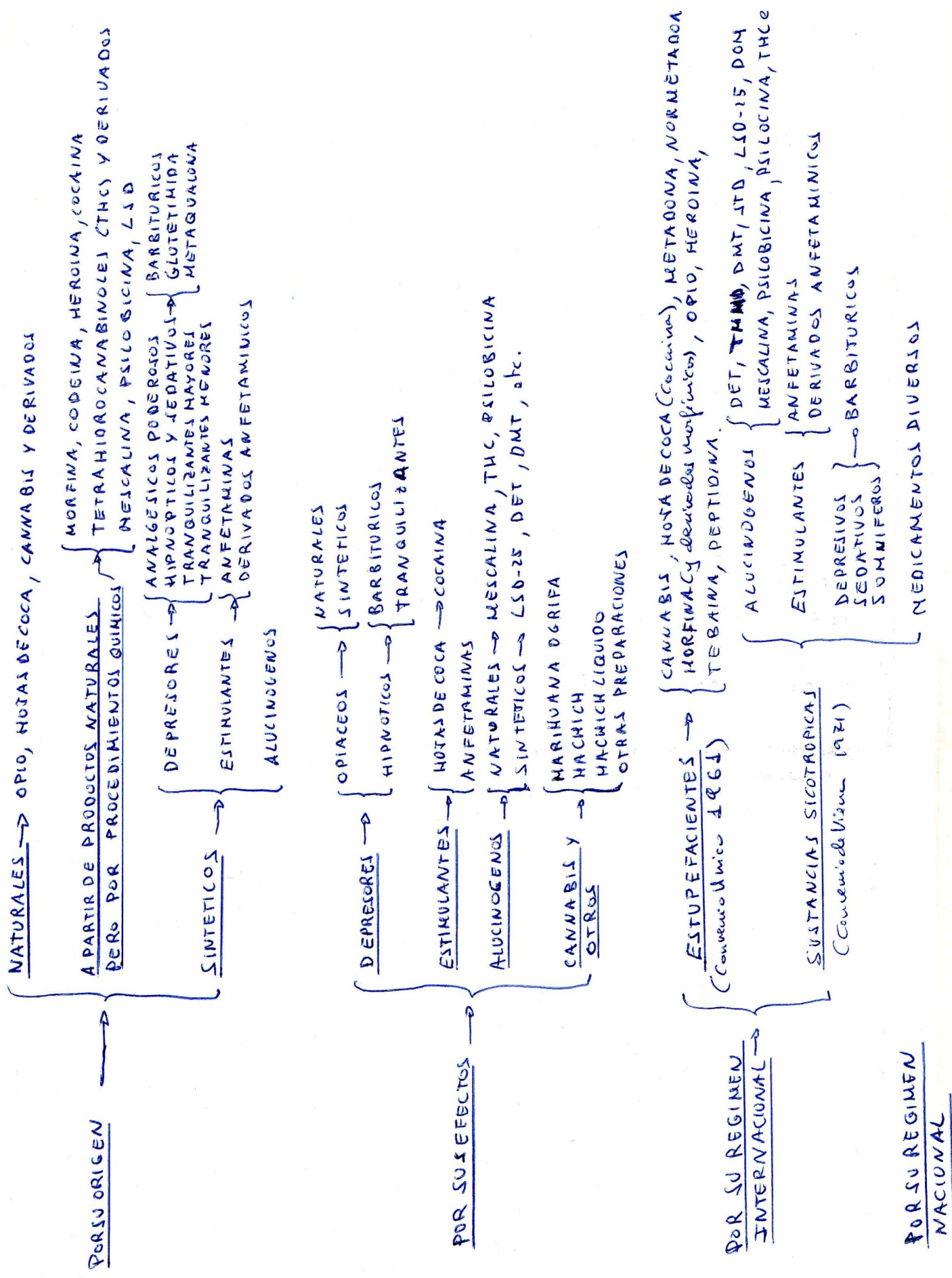
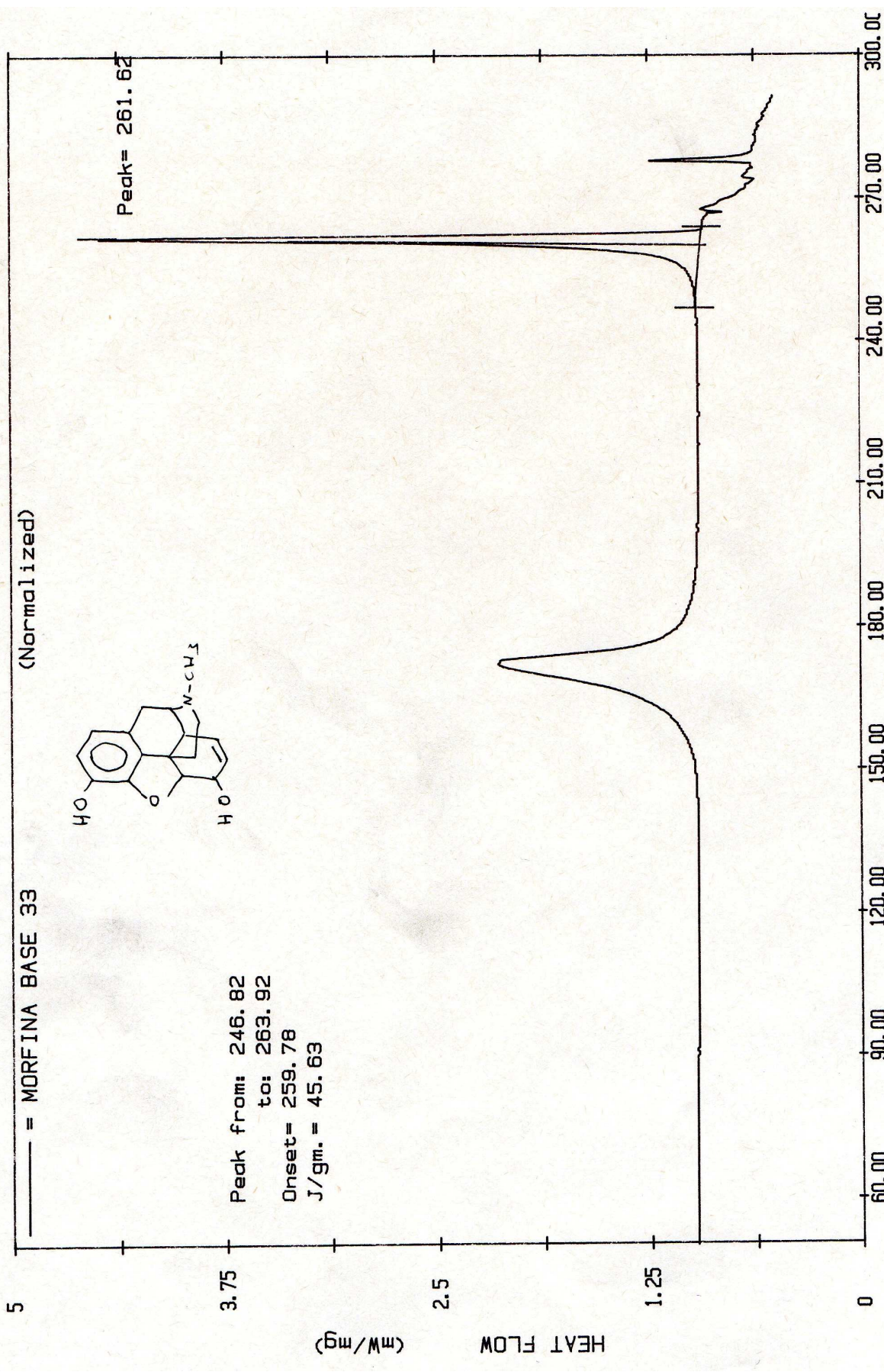


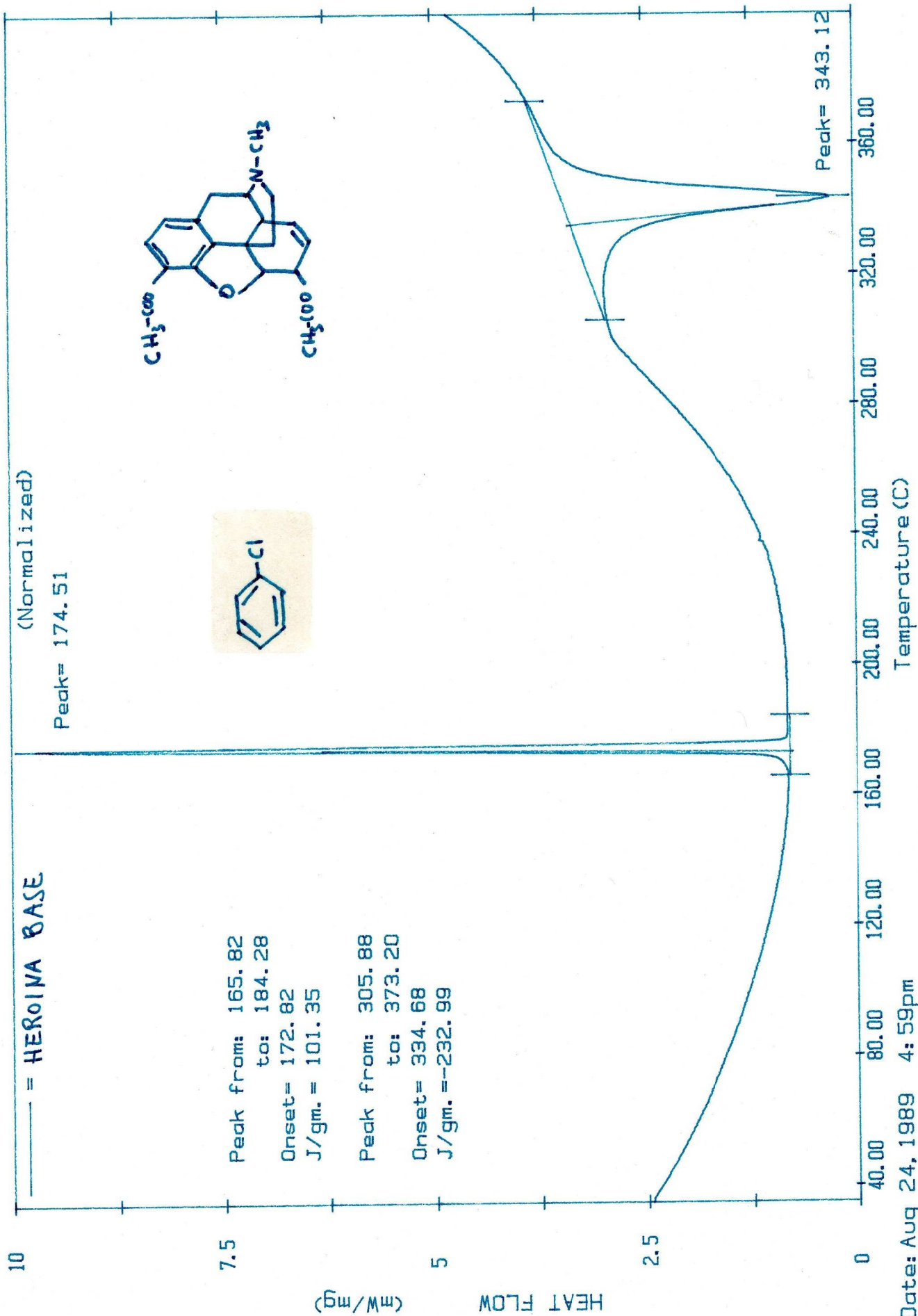
CLASIFICACION DE LAS DROGAS



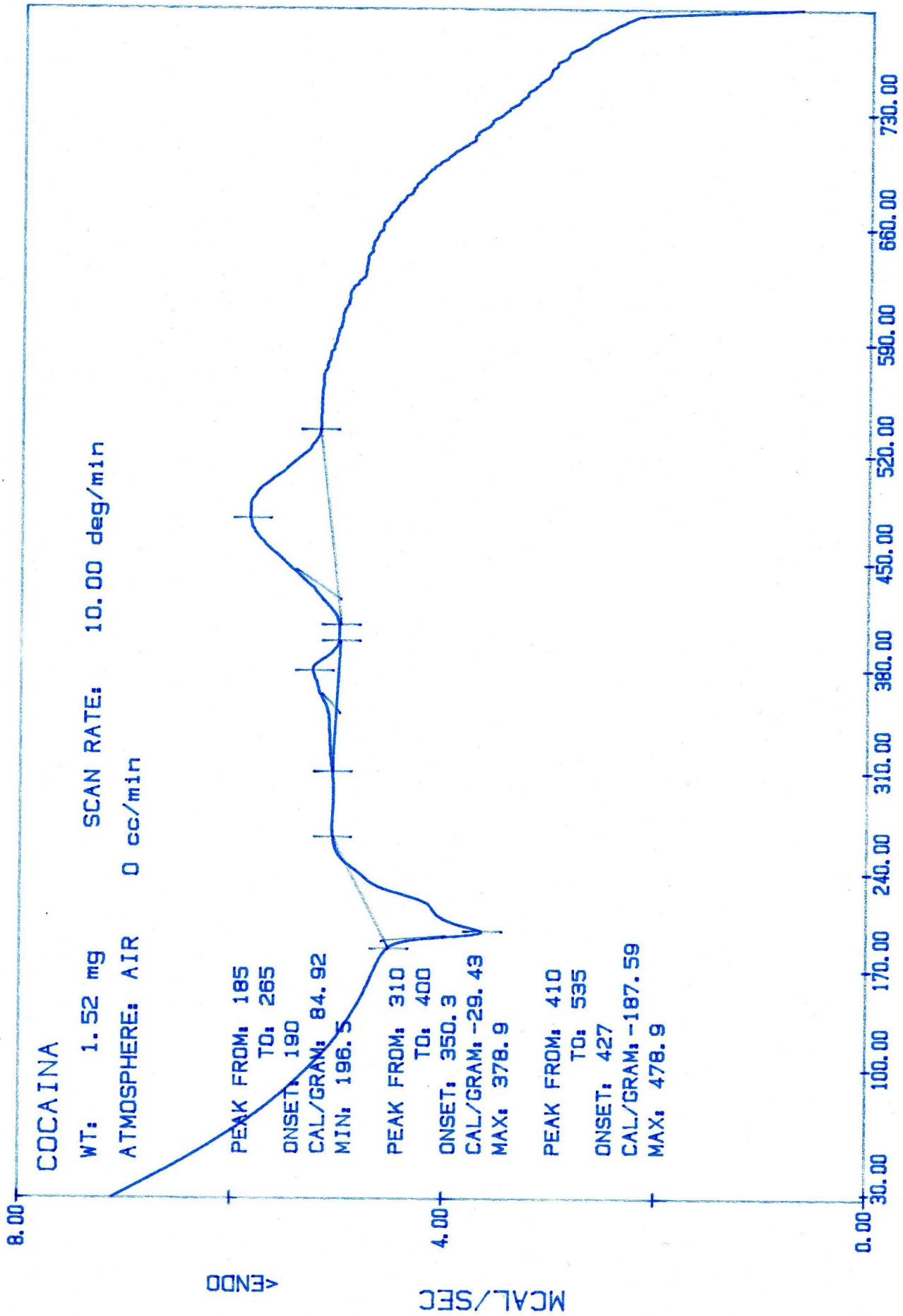


Date: Mar 06, 1990 7:16pm
 Scanning Rate: 10.0 C/min
 Sample Wt: 1.000 mg Path: c:\pe\pol11\
 File: 33 MSV

PE PC SERIES DSC7



Date: Aug 24, 1989 4: 59pm
 Scanning Rate: 10.0 C/min
 Sample Wt: 1.000 mg Path: A: \
 File: HEROINA

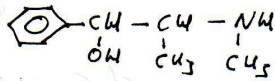


M. LUZ FILE: COCA.DT TEMPERATURE (C)

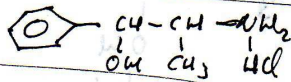
DATE: 88/03/22 TIME: 16:47

DTA

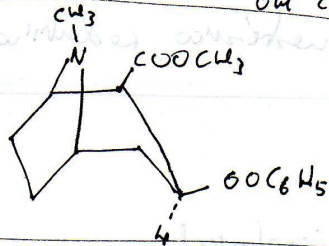
1) (-) EFEDRINA *Ambrosia*



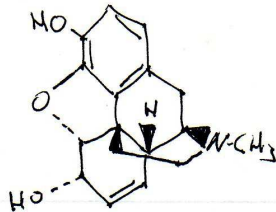
2) D-L-NOREFEDRINA



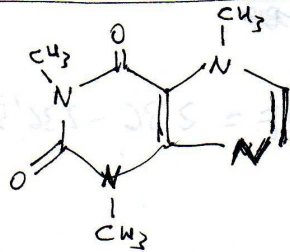
3) COCAINA



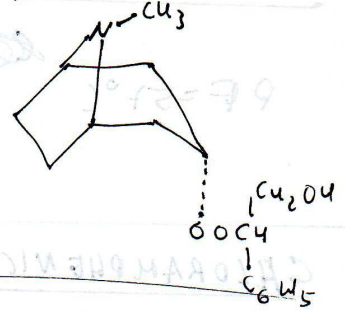
4) MORFINA



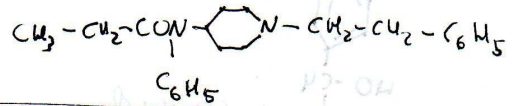
5) CAFFEINA



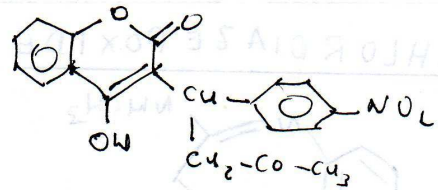
6) ATROPINA



7) FENTANILO

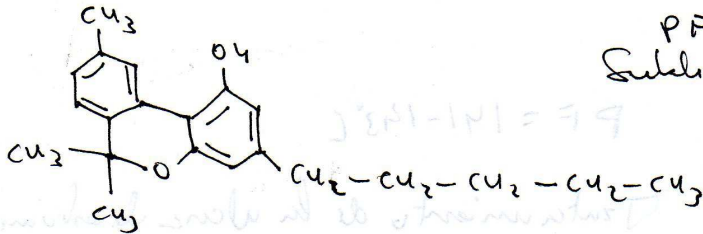


8) ACECUMARINA



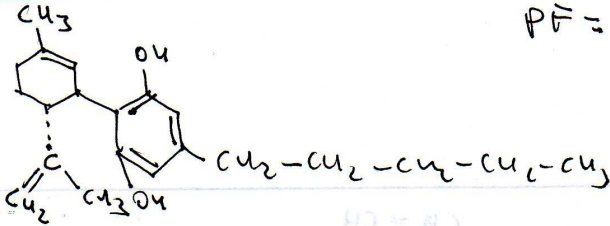
~~ACETANI~~

CANNABINOL



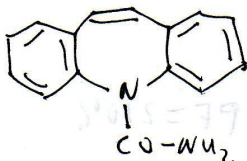
PF = 76-77°C
Solubilità a 180-190°C

CANNABIDIOL



PF = 66-67°C

CARBAMAZEPINE



PF = 204-206°C

Analgesico - anticonvulsant